

Site in Nevada County, AR

Prescott Industrial Park



The Prescott Industrial Park consist of 126 acres owned by the City of Prescott. The Industrial park is located on the frontage highway that runs between Exits 44 and 46 of Interstate 30. The access road is AR 200 also known as Ron Harrod Blvd. The property is adjacent to our largest employer Holcim. Utilities are on site with water having a 12 inch main, sewer a 8 inch main and electric with three phase, 13.8 KV. Natural gas is adjacent to the property. Telecommunications infrastructure are also in place on site including fiber optic connections. The Industrial Park has direct rail access via Prescott Northwestern to Union Pacific Railroad.

126 Acres

Contiguous Available:

Subdividable: Yes
Max Divisible Available: 126 Acres
Min Divisible Available: 1.00 Acres

Listing Price

Sale Price
15,000/Acre

Lease Price
NA

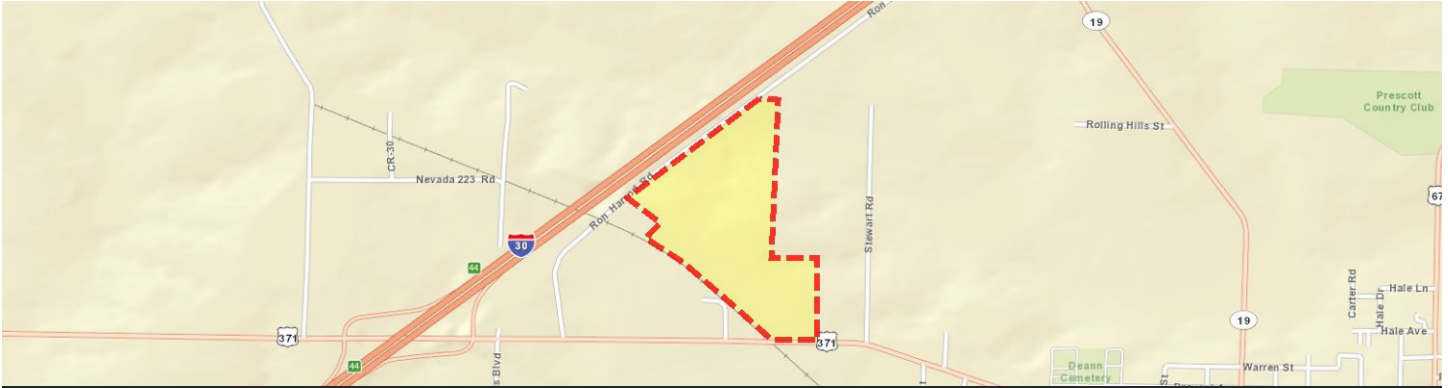
Property Type

- Industrial

This is only a summary of this property. For complete details visit:
<https://arkansassiteselection.com/Property/Detail/1228/Prescott-Industrial-Park>

Prescott Industrial Park

Transportation Infrastructure



Interstate 30 | Prescott, Arkansas 71857

Airports	
Primary: Kizer Field (4F7)	Additional: Gurdon Lowe Field (5M8)
2.5 Miles	15.4 Miles

Interstates	
Primary: I-30	Additional: I-30
0.5 Miles	0.6 Miles

U.S. Highways	
Primary: State Hwy 24	Additional: State Hwy 200
0 Miles	0 Miles

Rail	
Primary: Prescott & Northwestern Railroad	Additional: Arkansas Midland Railroad/A Genesee Wyoming Company
0 Miles	1 Miles

Navigable Water	
Primary: Ouachita River	Additional: Red River
Ouachita River Miles	27.2 Miles

Ports	
Primary: Port of Camden	Additional: Port of Little Rock
37.4 Miles	89.8 Miles

Prescott Industrial Park

Property Details

Fire Protection

Fire Station

Prescott Fire Department
Distance: 2.5 Miles
ISO Rating: 6

Cranes

Has Cranes: No

Utilities

Electricity

Provider: Municipal City of Prescott

Water

Provider: Municipal City of Prescott

Water Distance: 0 miles

Pipe Size: 12 inches

Telecommunications

Provider: Brightspeed

Natural Gas

Provider: Summit Utilities

Sewer

Provider: Municipal- City of Prescott

Sewer Distance: 0 miles

Pipe Size: 8 inches

Fiber-Optic

Provider: Brightspeed

Prescott Industrial Park

Space & More Information

More Information

Property Id: 1228

Enterprise Zone: Yes

Foreign Trade Zone: Yes

Industrial Park: Yes

Within City Limits: Yes

Former Use: Pasture Land

Additional Images



Prescott Industrial Park

Demographics

	Drive-Time: 30 minutes	Drive-Time: 60 minutes	Drive-Time: 90 minutes
2023 Key Demographic Indicators (Esri)			
2023 Total Population (Esri)	28,003	236,851	815,313
2023 Daytime Population (Esri)			
2023 Total Daytime Population (Esri)	30,387	241,508	865,627
2023 Daytime Population: Workers (Esri)	13,201	102,793	412,634
2023 Daytime Population: Residents (Esri)	17,186	138,715	452,993
2023 Income (Esri)			
2023 Average Household Income (Esri)	60,008	69,681	75,377
2023 Per Capita Income (Esri)	24,438	28,031	31,007
2023 Educational Attainment (Esri)			
2023 Population Age 25+: High School Diploma (Esri)	7,415	52,077	166,726
2023 Population Age 25+: Some College/No Degree (Esri)	3,826	36,505	118,714
2023 Population Age 25+: GED/Alternative Credential (Esri)	1,049	9,556	31,771
2023 Population Age 25+: Associate's Degree (Esri)	1,757	14,253	51,364
2023 Population Age 25+: Bachelor's Degree (Esri)	2,280	23,113	95,887
2023 Population Age 25+: Graduate/Professional Degree (Esri)	969	12,354	54,096
2023 Labor Force (Esri)			
2023 Employed Civilian Population Age 16+ by Occupation Base (Esri)	10,846	95,248	357,928
2023 Occupation: Production (Esri)	1,394	8,342	23,296
2023 Occupation: Transportation/Material Moving (Esri)	1,193	8,680	30,776
2023 Occupation: Architecture/Engineering (Esri)	24	1,077	4,925
2023 Occupation: Farming/Fishing/Forestry (Esri)	177	829	1,859
2023 Occupation: Construction/Extraction (Esri)	552	5,113	20,812
2023 Occupation: Office/Administrative Support (Esri)	1,195	10,885	40,070

Prescott Industrial Park

Documents Available Online

[boardary_map_2012_Crafton-Tull.pdf](#)

To download all documents & view videos, visit <https://arkansassiteselection.com/Property/Detail/1228/Prescott-Industrial-Park>

Ready to learn more about this site?



Mary Godwin
Executive Director
mgodwin@pnpartnership.org

Office: 870-8876208
Mobile: 870-703-4912
Fax:

Mary Godwin
Director
mgodwin@pnpartnership.org

Office: 870-887-6208
Mobile: 870-703-4912
Fax: 870-887-5317



PRESCOTT
ARKANSAS
ECONOMIC DEVELOPMENT OFFICE
Nevada County Economic Development Office
P.O. Box 307
Prescott, AR 71857

Prescott Economic Development Office
P.O. Box 307
Prescott, AR 71857

Entergy Corporation and its subsidiaries, including Entergy Services, LLC, Entergy Arkansas, LLC, Entergy Louisiana, LLC., Entergy Mississippi, LLC, Entergy New Orleans, LLC, Entergy Texas, Inc., (collectively, the "Entergy Companies") are not licensed to market any real property.

Information about these properties is provided merely to assist in economic development efforts. The Entergy Companies make no representations or warranties whatsoever regarding accuracy or completeness of the information nor the condition or suitability of these properties. Inquiries about any property should be directed to the listing broker for that property. Used only with the permission of the Entergy Companies. Usage restricted.

© 1997 – 2024, Entergy Corporation, All Rights Reserved.

This is only a summary of this property. For complete details visit:
<https://arkansassiteselection.com/Property/Detail/1228/Prescott-Industrial-Park>



Buildings & Sites
By Entergy